

WOLF RAILING

STAIR RAIL INSTALLATION GUIDE

Adhere to local building codes and principles when installing Wolf Railing. All installations are unique and the sole responsibility of the installer to determine specific requirements for each application. Wolf claims no liability or responsibility for the improper installation of this product. These instructions explain how to install stair rail in a typical application and assume that the steps have a typical angle between 32° and 35° and the posts are plumb. Wolf recommends that all designs be reviewed by a licensed engineer, architect, and/or local building inspector before installation.

STEP 1

Unbox your section of railing, making sure you have all parts and pieces needed for assembly.

STEP 2

Lay the rail on the steps, beside the posts. Make sure the baluster holes are facing upward. Measure the distance between the baluster holes and your mounting surface to ensure that the rail is centered.

STEP 3

Using the side of the posts as a guide, mark an angled line on the rail at both the top and bottom of the rail, allowing about 1/8" on each end for expansion.

STEP 4

Repeat Steps 2-3, ensuring that the baluster holes on the top and bottom rails are the same distance from the mounting surface on both sides.

STEP 5

Cut each end according to your mark in Steps 2-4 using a circular saw or miter saw. (Note: leave aluminum inserts in place while cutting.)

STEP 6

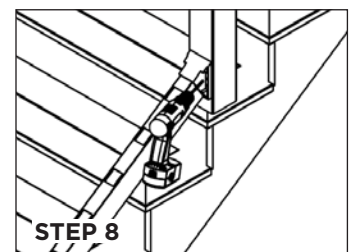
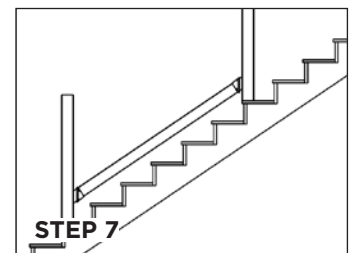
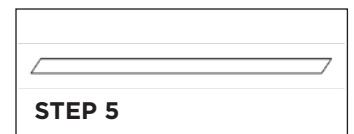
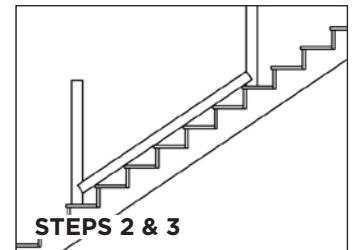
Place the bottom mounting brackets onto the bottom rail at each end, making sure the flat side is facing the mounting surface. Pay attention to the orientation of the brackets. One is for the top of the stairs and one is for the bottom.

STEP 7

Position the bottom rail between mounting surfaces. Ensure the distance between the underside of the bottom rail and nose of the treads does not exceed 1".

STEP 8

Pre-drill each screw hole before securing the bracket to the mounting surface using the screws provided. Stainless steel screws, while corrosion resistant, are "softer" than other materials and pre-drilling is recommended.



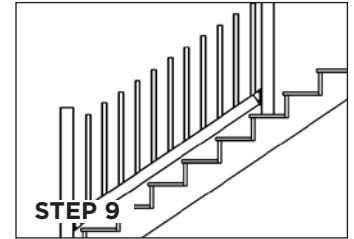
WOLF HOME PRODUCTS®

WOLF RAILING

STAIR RAIL INSTALLATION GUIDE

STEP 9

Insert the balusters into the bottom rail, ensuring they insert fully into the rail and extend all the way to the bottom.



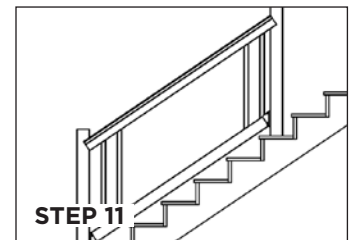
STEP 10

Slide top rail brackets onto the top rail the same way as in Step 6. Pay attention to the orientation of the brackets. One bracket slopes downward—this is the bracket for the top of the stairs. The bracket for the bottom of the stairs slopes upward.



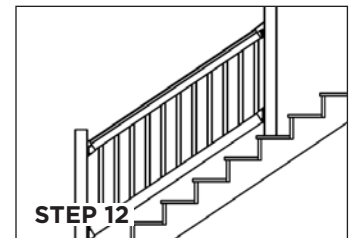
STEP 11

Install the cut top rail with the aluminum insert by starting at one end of the rail section. Insert each baluster into the matching hole of the top rail. Ensure the balusters insert fully into the top rail and extend all the way to the aluminum insert.



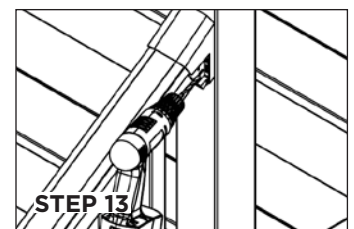
STEP 12

Position and install the top rail to the posts. Secure the top rail brackets by pre-drilling each screw hole and using the screws provided.



STEP 13

Each bracket set contains 2 set screws with screw covers. Pre-drill through the top and one side of each bottom bracket into the bottom rail and through the bottom and one side of each top bracket into the top rail. Secure the screws into place.



STEP 14

Check your installation for accuracy before snapping the decorative screw covers of each bracket into place.

